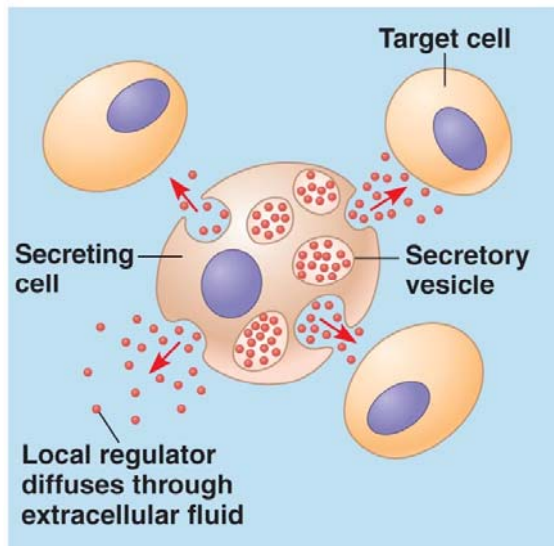


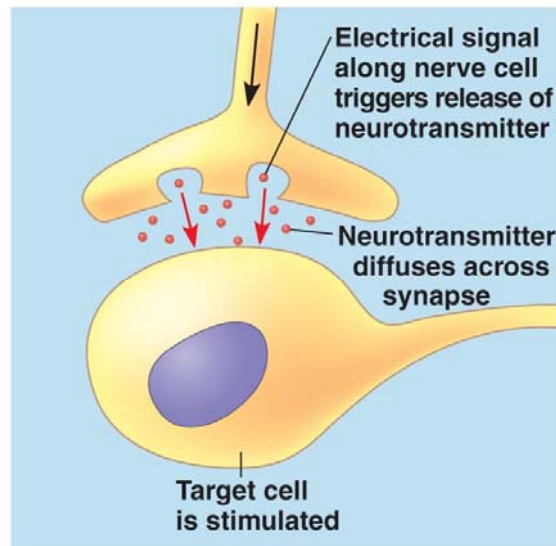
Relate *hybrid vigor* to the drawing above.

Local signaling

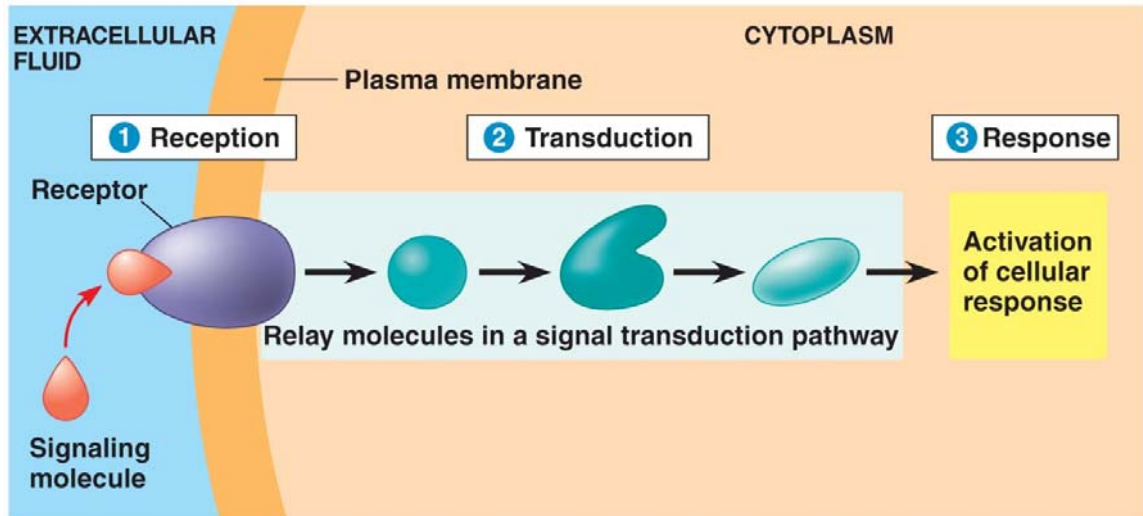


(a) Paracrine signaling

Copyright © 2008 Pearson Education, Inc., publishing as Pearson Benjamin Cummings.



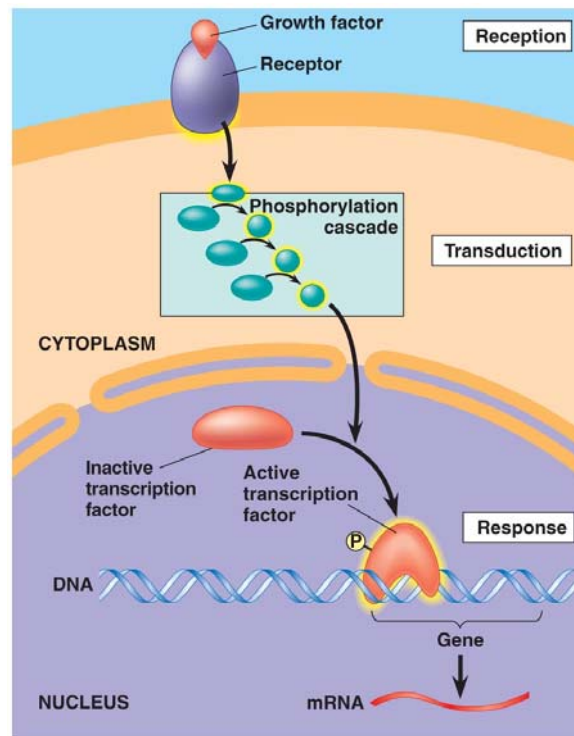
(b) Synaptic signaling



Copyright © 2008 Pearson Education, Inc., publishing as Pearson Benjamin Cummings.

Give some examples of the above from human physiology.

Steroid Hormones...actually turn on genes.



Copyright © 2008 Pearson Education, Inc., publishing as Pearson Benjamin Cummings.